

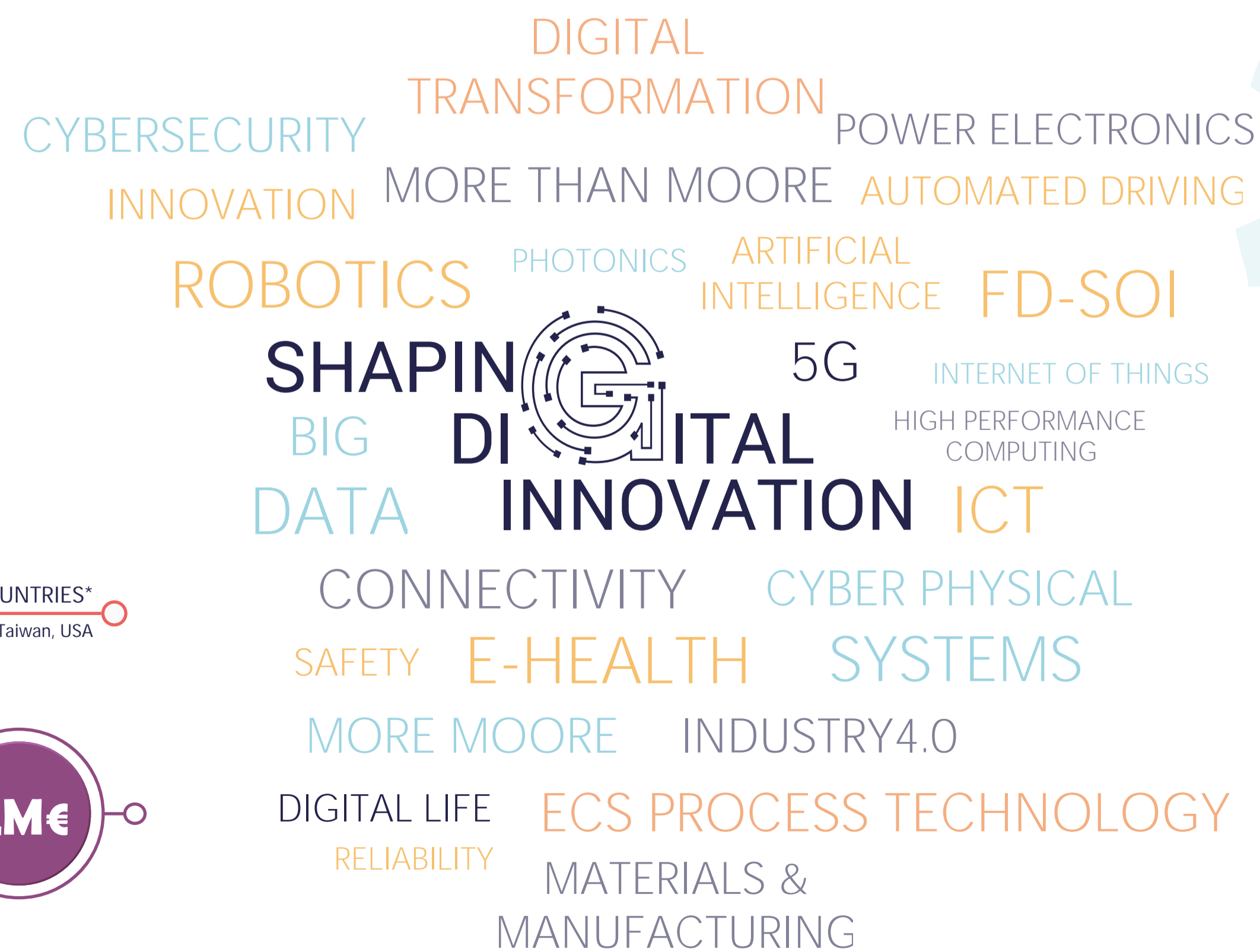
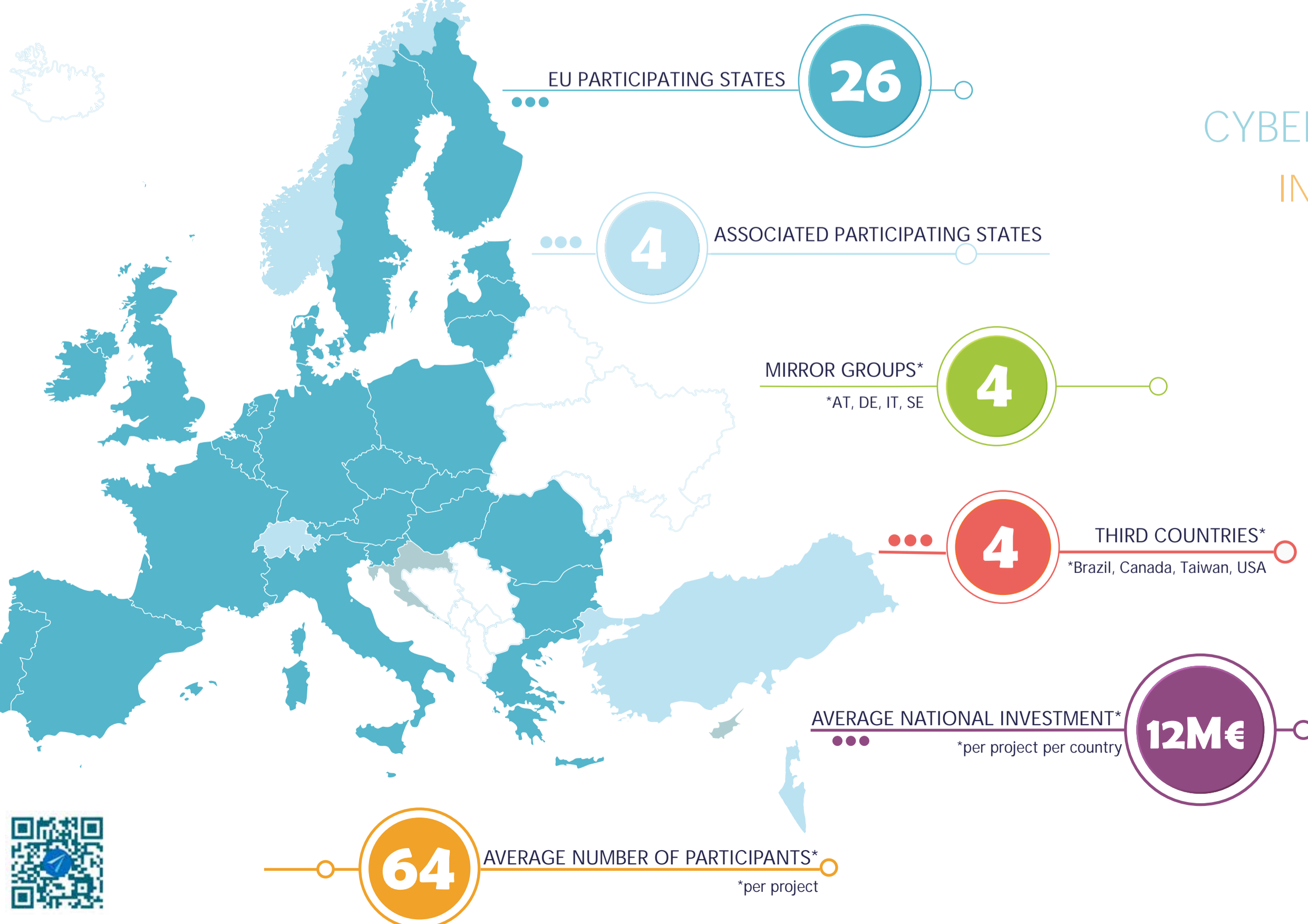
ESSENTIAL CAPABILITIES

- CONNECTIVITY & INTEROPERABILITY**: Secure, seamless and timely exchange of information
- SYSTEMS & COMPONENTS ARCHITECTURE, DESIGN & INTEGRATION**: Designing, integrating and analysing systems that enable the digital future
- SAFETY, SECURITY & RELIABILITY**: The physical building blocks of the ECS value chain
- COMPUTING & STORAGE**: The underlying enablers of the digital world
- ECS PROCESS TECHNOLOGY**: The physical building blocks of the ECS value chain

KEY APPLICATIONS

- HEALTH & WELL-BEING**: Enabling a portable and accessible healthcare
- DIGITAL LIFE**: Effective and user-friendly electronic systems for safety, comfort and fulfillment
- ENERGY**: Sustainable power generation, conversion and distribution
- DIGITAL INDUSTRY**: Moving beyond automation for economically and ecologically sustainable growth
- TRANSPORT & MOBILITY**: Clean, efficient and safe transportation

Data for the Calls 2014 - 2019 incl.



ECSEL JU PROJECTS IMPACT

